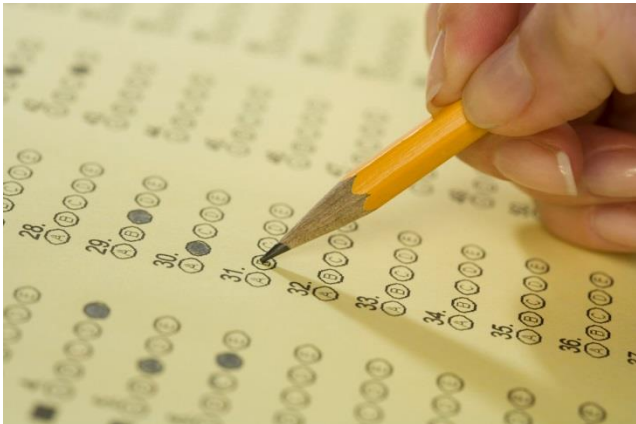


# Kent Test Procedure

## Welcome

Thursday 21<sup>st</sup> May 2014



# Kent Test (11+ process)

- Just one day of testing
- 2X tests and a writing exercise
- 1 X test – English and Maths
- 1 X test – Reasoning skills





## When is it?

- Register between June 1st and July 1<sup>st</sup> 2015 online or download form from [www.kent.gov.uk/ola](http://www.kent.gov.uk/ola)
- Phone for a form: 03000 41 21 21
- Testing takes place on September 10<sup>th</sup> 2015

## Where is it?

- During school time, here at Brookfield Junior School.

## Should I be considering this for my child?

- Although this exam is open to all, if currently your child is working at expected high or exceeding in Reading, Writing and Maths, then they have a good chance of passing .

# What do they have to do to pass?

- To be automatically assessed suitable for grammar school in the past Kent 11+ process, a child needed to score a total of **360 or more** in the tests, **with no single score lower than 119**. Scores for Grammar School need to be above average (100)
- (eg ~ scores needed 3 x 120+ – Total 360+)
- The threshold scores may change

Name	English	Maths	Reasoning	Assess
Alice	120	125	127	G
Bob	123	139	107	H (G)
Carol	126	122	89	H
Duncan	113	110	119	H



**We will not be coaching your children**  
**Quote from KCC Instructions:**

**“Coaching is not required or permitted.**  
If we receive evidence that a school is coaching  
we reserve the right to “unlink” it from PESE,  
and no longer to send test materials to the  
premises.”

# What can you do to help?

- Familiarisation booklets from WH Smith





# Appeals

- School will receive the results before the parents
- School may appeal with evidence of work completed in Year 5 and the beginning of year 6.
- Assessment decision sent to parents Wednesday 14<sup>th</sup> October 2015 (Letters to arrive Thurs 15<sup>th</sup> Oct)

- 
- National closing date for Secondary Common Application Forms (SCAF)  
Saturday 31<sup>st</sup> October 2015



- National Offer Day : Tuesday 1<sup>st</sup> March 2015 (e-mail), letters sent 1<sup>st</sup> Class to arrive Wednesday 2<sup>nd</sup> March





# Registration

[www.kent.gov.uk/ola](http://www.kent.gov.uk/ola)

You will need to register before you can log in.

These log in details will be the same as the ones you had if you registered your child for Infant School on line.

## More Information

[www.kent.gov.uk](http://www.kent.gov.uk)

