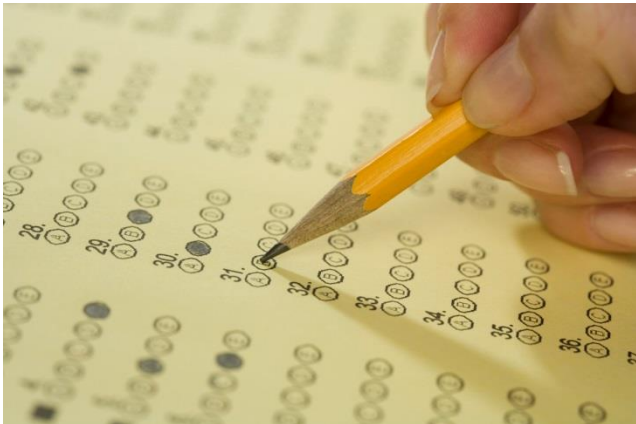


Kent Test Procedure

Welcome

Tuesday 24th May 2016



Kent Test (11+ process)

- Just one day of testing
- 2X tests and a writing exercise
- 1 X test – English and Maths
- 1 X test – Reasoning skills





When is it?

- Register between June 1st and July 1st 2016
online or download form from www.kent.gov.uk/ola
- Phone for a form: 03000 41 21 21
- Testing takes place on Thursday 8th September 2016

Where is it?

- During school time, here at Brookfield Junior School.



Should I be considering this for my child?

- At Brookfield we follow the new national curriculum with revised year group expectations in English and Maths. Remembering that the revised year group expectations are of a much higher standard than previously taught; here is a general guide:-
- ‘Purple’ work = application of current year group skills and further development of understanding
- ‘Blue’ work = following the current year group expectations
- ‘Green’ work = following year group expectations of 1 year below
- Although the test is open to all, in order to have a good chance of passing the 11+, your child needs to be working consistently on Blue/Purple work.



We will not be coaching your children
Quote from KCC Instructions:

“Coaching is not required or permitted.
If we receive evidence that a school is coaching
we reserve the right to “unlink” it from PESE,
and no longer to send test materials to the
premises.”

What can you do to help?

- Familiarisation booklets from WH Smith



Also look at the Familiarisation Booklet on kent.gov.uk



Appeals

- School will receive the results before the parents
- School may appeal with evidence of work completed in Year 5 and the beginning of year 6.
- Assessment decision sent to parents Thursday 13th October 2016 (Letters to arrive Friday 14th October).

RESULTS DAY

The results for the 2016 Kent Test will be sent out on **13 October 2016**. You can get your results:

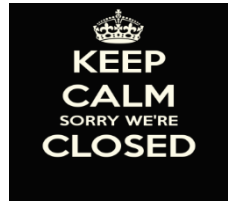
- **by email:** If you registered online we'll email your results **after 4pm**. We cannot guarantee the exact time you will receive your email, this will depend on your email service provider
- **online:** You can log in after 5pm to view your results online
- **by post:** Results will be sent out by first class post on 13 October 2016
- **from your primary school:** Test scores are available from your primary school from 14 October 2016. We cannot give out test scores over the phone.
- **You can't appeal against your child's Kent Test results.**

What do they have to do to pass?

- Last year, to be automatically assessed suitable for grammar school in the 2015 Kent 11+ process, a child needed to score a total of **320 or more** in the tests, **with no single score lower than 106**.
- The threshold scores may change

Name	English	Maths	Reasoning	Assess
Alice	130	140	140	G 410
Bob	110	105	120	H (G) 335
Carol	126	122	89	H 337
Duncan	105	104	98	H 307

- Now you know your child's score, it is time to decide on the school for your child. You can still choose a Grammar school even if your child did not pass the 11+
- National closing date for Secondary Common Application Forms (SCAF) Monday 31st October 2016
- National Offer Day : **wednesday 1st March 2017 (e-mail), letters sent 1st Class to arrive Thursday 2nd March**



This is the time you can start the appeal process if necessary.

Registration

www.kent.gov.uk/ola

You will need to register before you can log in.

These log in details will be the same as the ones you had if you registered your child for Infant School on line.

More Information

www.kent.gov.uk

