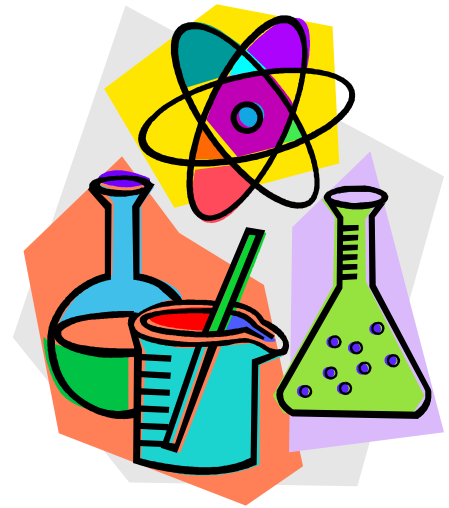


A Secondary School For My Child



Apply



- If your child is due to start secondary school in September 2017 you can apply now.
- The national closing date for applications is 31st October 2016.
- You can [apply online](#) at www.kent.gov.uk or by post using the [Secondary Common Application Form \(SCAF\) \(PDF, 107.4 K B\)](#).

Tel:03000 41 21 21

Things to consider.....

- visit the school - most schools have open days you can go to
- ask other parents what they think about the school
- check the school's admissions criteria - this sets out how schools choose which children to offer a school place to
- read the school's Ofsted reports
- think about what school transport is available
- find out how the school can support your child if you are choosing a school for a child with special educational needs



If your child took the 11+

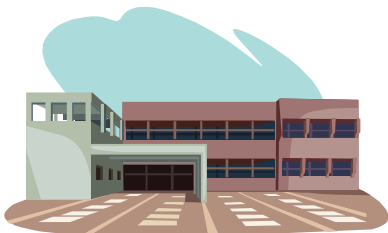
Assessments e-mailed / posted
to parents

13th October 2016 (letters to
arrive 14th October)



Kent LA will pass all Kent secondary schools an electronic list of the details of all children who have named them as a preference **without indicating whether they were a first, second, third or fourth preference.**

The LA use a computerised system to compare the lists and allocate school places.



Parents will be notified on **1st March 2017 (email)**, of the offer of a single school place, and they will be told how to lodge an appeal if they are not happy with the offer they have received. **Online notifications will arrive by e-mail after 4pm on Wednesday 1st March; letters will arrive on 2nd March.**



School Transport

You will not automatically receive transport assistance to any school that offers you a place.



As a general rule, free transport is offered if their allocated school is:

- The nearest appropriate school, and
- Is more than 3 miles from home

You may also receive free transport if you are from a low income family.

Secondary School Visiting Times

Thursday 29th September 2016
Open Evening from 6pm



Open Day Tours

Monday 3rd October 2016

Tuesday 4th October 2016

Please contact the School to arrange a visit.

Tel: 01634 240416

Email: office@holmesdale.kent.sch.uk

Open Evening - Thursday 6th October 6.00pm – 9.00pm

Open Mornings –

Monday 10th, Tuesday 11th, Wednesday 12th,
Monday 17th, Tuesday 18th, Wednesday 19th
October

.

Tours at 9.45am and 11.45am each of these mornings.

To book a morning tour please call 01732 529122
or 01732 840995

Aylesford School Sports College

Open Evening

Tuesday 27th September 5.00pm –
8.00pm

Open Day Tours

Thursday 29th September, Friday 30th
September

Book Tours via school office:

Contact 01622 717341

Aylesford School
Sports College

